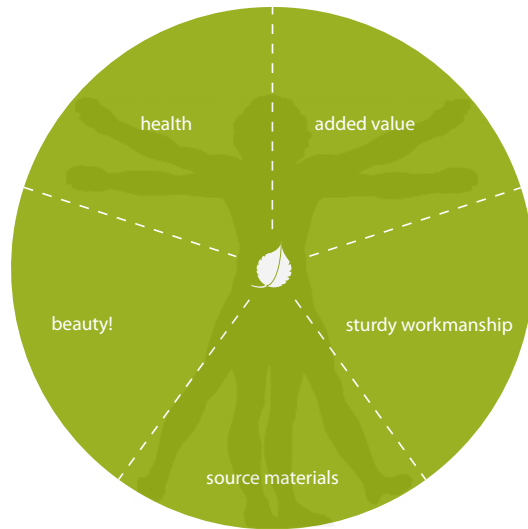


Sustainability



Sustainability



Introduction

In architecture, the concept of sustainability relates to a building's energy balance or the use of sustainably produced materials. But architectural sustainability also relates to a building's impact and function, evaluated in the long term, as well as to its capacity to adapt to changing conditions while maintaining its value and authenticity.

Our approach to architectural sustainability is based on five concepts:

- added value
- sturdy workmanship
- source materials
- beauty!
- health.

The aim of this approach is to produce and promote sustainable architecture in the most literal sense of the term: architecture that can stand the test of time!

JSA

Postbus 1064
3000 BB Rotterdam

Blekerstraat 10
Rotterdam

t +31 (0)10 2010400
f +31 (0)10 2010401

info@jsa-rotterdam.nl

Sustainability



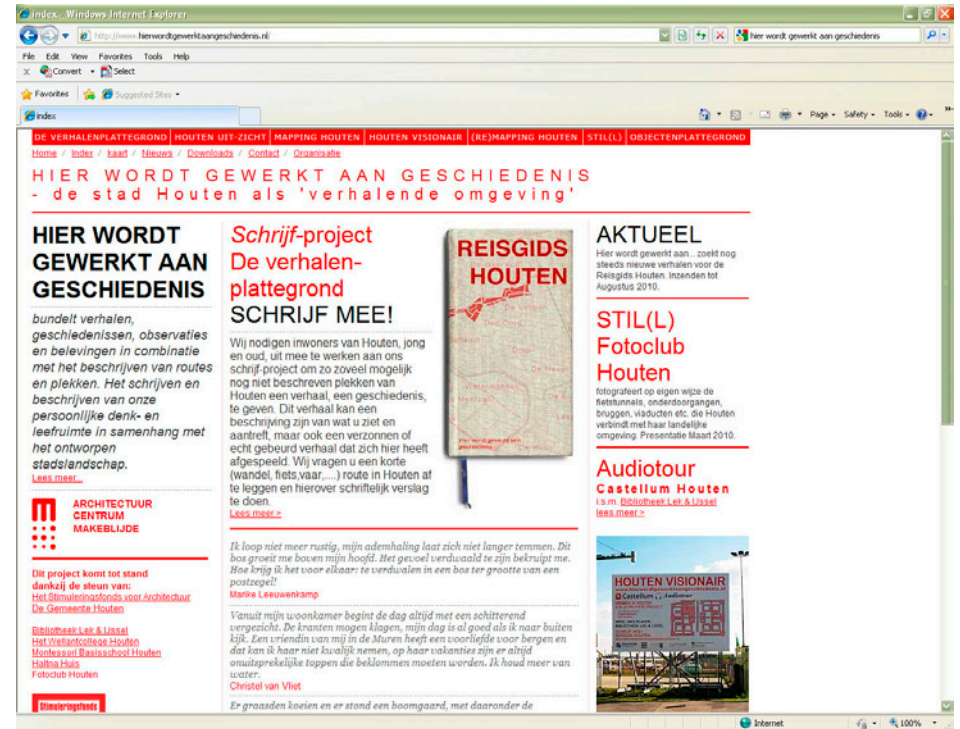
Added value

Our design practice is informed by our conviction that a good building should enhance the value of its setting. This added value can be spatial, social, or economic. We consider it essential that the completed building actually benefits the area around it.

With this in mind, we often take the spatial and social context as our starting point and source of inspiration. Our office gives careful attention to crafting appropriate and creative responses to a wide range of architectural challenges.

As designers of custom-made products, we attach special value to the perfection of the end result. That's why we go to great lengths to make sure that our plans are carried out in a sound and thorough manner. In fact, we maintain close supervision throughout the creation process, all the way from the earliest sketches to the delivery of the building.

community-art project in Houten



Sustainability



Residential blocks made of sturdy materials on the shores of Markermeer.



Sturdy workmanship

We believe in lasting architecture, durable in its materials and flexible in its uses. This goes hand in hand with materials and details that do full justice to the design while being sturdy enough to withstand the passage of time and intensive use, materials that display and retain their value in the long term.

Deterioration of materials must be avoided wherever possible. By opting for materials and products that can be restored to their original state with a minimum of effort, we ensure that aesthetic degeneration remains limited. We do not believe in maintenance-free materials. In fact, we firmly believe that there is no such thing. Often, chasing after maintenance-free materials can compromise a project, both structurally and aesthetically. We believe that smart buildings use materials requiring various forms of maintenance. We strive to keep maintenance limited upon request and simple wherever possible.



Sustainability



Source materials

We have a strong architectural preference for working with natural materials, simply because they can be so beautiful. Of course, another relevant consideration, from the point of view of responsible business practice, is that these materials are often sustainable. When we do use non-natural materials, our preference is for products that can be reused relatively easily in a variety of manufacturing processes.

The final products of materials such as clay, wood, and wool are close to the original in appearance. This straightforward, honest quality matches our architectural idiom: pure, clear, and open. The intrinsic visual and tactile properties of natural materials are ideally suited to the consistent design and responsible execution of a clear architectural concept.

For both conceptual and contextual reasons, we favour an architectural idiom that actively engages with local identity. Where possible, this involves the use of materials from within the region, which are sustainable because transport is limited and are familiar to locals.

The sources of a sustainable palette of materials.



Sustainability



A variety of signs for listed buildings.



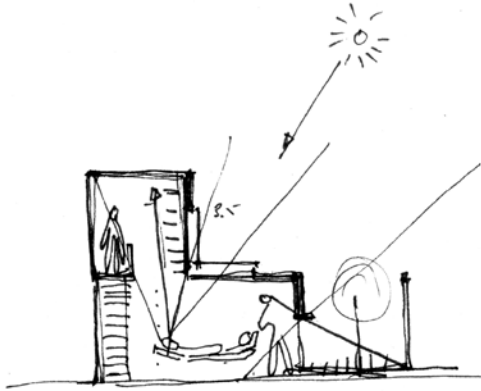
Beauty!

Our objective is to create sustainable architecture by making beautiful buildings: not an architecture of consumption, but designs that are emphatically unique, cherished by their users, and maintained with love.

In our work, we make no distinction between different fields, scales, and market sectors. At every level, our aim is a beautiful, professional, high-quality final product that complements its surroundings.



Sustainability



Health

A building should run smoothly – in other words, it should be healthy. By a healthy building, we mean one that meets its users' wishes as fully as possible and has an indoor climate designed to be optimal and easily adjustable.

In our functional design approach, the user is central. This finds expression in carefully planned and often innovative floor plans, which reflect the whole range of user needs. We often start reflecting on possible future changes during the design stage. Distinguishing between fixed and flexible design components is an essential guarantee of a long lifespan.

A healthy indoor climate includes daylight, fresh air, and an ideal temperature. Daylight has a positive effect on human health and concentration, and managing natural light is a fundamental part of our work. Large, strategically placed openings in the façades create pleasant, well-lit spaces, but this has to be kept in balance with an optimal indoor climate, especially in the summer and winter. When working out the details of our façades, we therefore carefully consider functional solutions that block direct sunlight where appropriate but let in plenty of indirect light. Special attention is devoted to ventilation systems that are aesthetically integrated into the skin of the building.

Filtered natural light and the user experience combine to create a pleasant, sustainable building.

